

KBM VEC-1

Product Summary

This product is a culture medium suitable for cultivation of vascular endothelial cell. You can use for a study of blood vessel pathology and angiogenetic, development of medical supplies and toxicological test, etc..

Features

- This product is a low serum culture medium which consists of 500ml of Basal Medium, FBS(2% Final concentration) and Supplement.
- FBS is performed quality check every batch and only used approved one.
- Add FBS and Supplement in Basal Medium as it is used. Please store the culture media avoiding temperature rise after the addition and use it within 1 month.
- Human serum can be used instead of FBS.

Supplement			
rhEGF	rhFGF-basic	rhVEGF ₁₆₅	rhIGF-I



Cell culture example

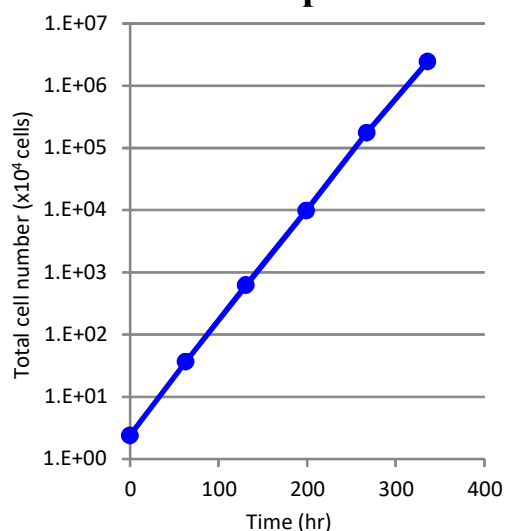


Fig. 1 : Growth curve in passage culture

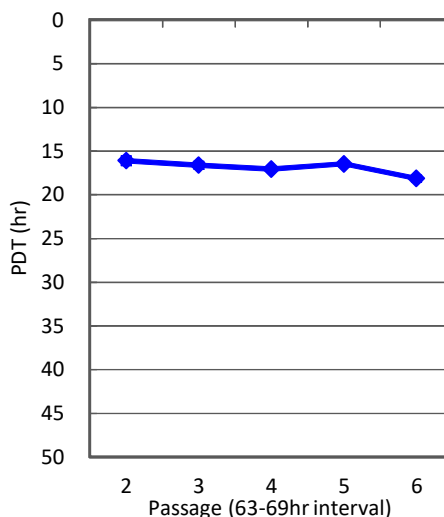


Fig. 2 : PDT variation in passage culture

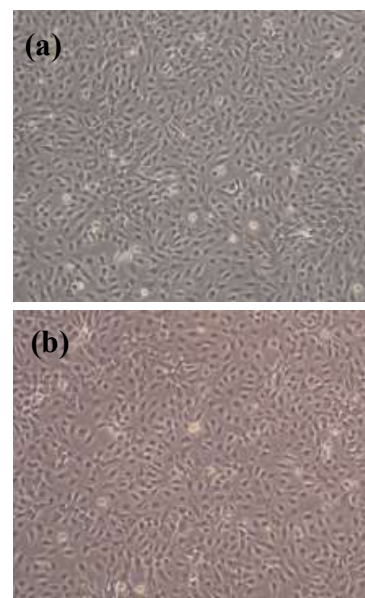


Fig. 3 (a) : HUVEC on the 3rd day in P3
(b) : HUVEC on the 3rd day in P

[Culture Condition]

Seeded cells : HUVEC

Culture medium : KBM VEC-1

Vessel : 6 well plate (Corning 3516)

Protocols : Seed into 2.4×10^4 cells/well and culture at 37°C and under the environment of 5% carbon dioxide gas .

Leave and subculture at 3 day interval.

Product No.	Product Name	Size	Price	Shelf time	Storage
16030100	KBM VEC-1	1 Kit	JPY21,000	6 months	2-8°C/-20°C
16030110	KBM VEC-1 Basal Medium	500 mL	JPY18,000	6 moths	2-8°C
16030120	KBM VEC-1 Supplement	0.5 mL	JPY9,000	12 months	-20°C
16030130	KBM VEC-1 FBS	10 mL	JPY9,000	12 months	-20°C